

SENEER

Lifting Column



CONTENTS

PHARMA LIFTER FOR BIN

FEATURE	/01
FUNCTION	/02
ADVANTAGE	/03
APPLICATION	/04
SPECIFICATION	/05

MOVEABLE COLUMN LIFTER

FEATURE	/06
FUNCTION	/07
ADVANTAGE	/08
APPLICATION	/09
SPECIFICATION	/10

FIXED COLUME LIFTER

FEATURE	/11
FUNCTION	/12
ADVANTAGE	/13
APPLICATION	/14
SPECIFICATION	/15

LHM PHARMA LIFTER WITH CONE-MILL

FEATURE	/16
FUNCTION	/17
ADVANTAGE	/18
APPLICATION	/19
SPECIFICATION	/20

LHT PHARMA LIFTER WITHOUT CONE-MILL

FEATURE	/21
FUNCTION	/22
ADVANTAGE	/23
APPLICATION	/24
SPECIFICATION	/25

Pharma Lifter For Bin

- Feature ■
- Function ■
- Advantage ■
- Application ■
- Specification ■

Pharma Lifter For Bin Feature

- ◆ Easy operation, cleaning, and maintenance
- ◆ The Pharma Lifter for Bin's column is constructed of unique channel steel
- ◆ It uses integrated control technologies to provide consistent and dependable results
- ◆ Hydraulic or mechanical lifting can be used in the lifting and drive system
- ◆ It improves manufacturing operations, reduces labor effort, and minimizes dust pollution



To avoid damage or mis operation, use an interlock system ◆

The equipment is adaptable and can handle a variety of batch sizes ◆

The working noise level is 70 decibels (A) ◆

The usual operating temperature ranges from 5°C to 40°C ◆

It complies with current Good Manufacturing Practices (cGMP) ◆

Pharma Lifter For Bin Function

- ◆ A column for lifting the main components of a bin are the column, the operating box, and the lifting system. Push the bin into the fork once it's working. Start the lifting system to lift the bin to a particular height, rotate the column horizontally to the process position, start the lower button to lower the bin to the needed position automatically, open the butterfly valve, and complete the next step



our superior

Pharma Lifter
For Bin PRODUCT

Pharma Lifter For Bin Advantage

- ◆ Cost Savings
- ◆ Operation in Silence
- ◆ Handle Heavy and Eccentric Loads
- ◆ Extremely Adjustable Handles

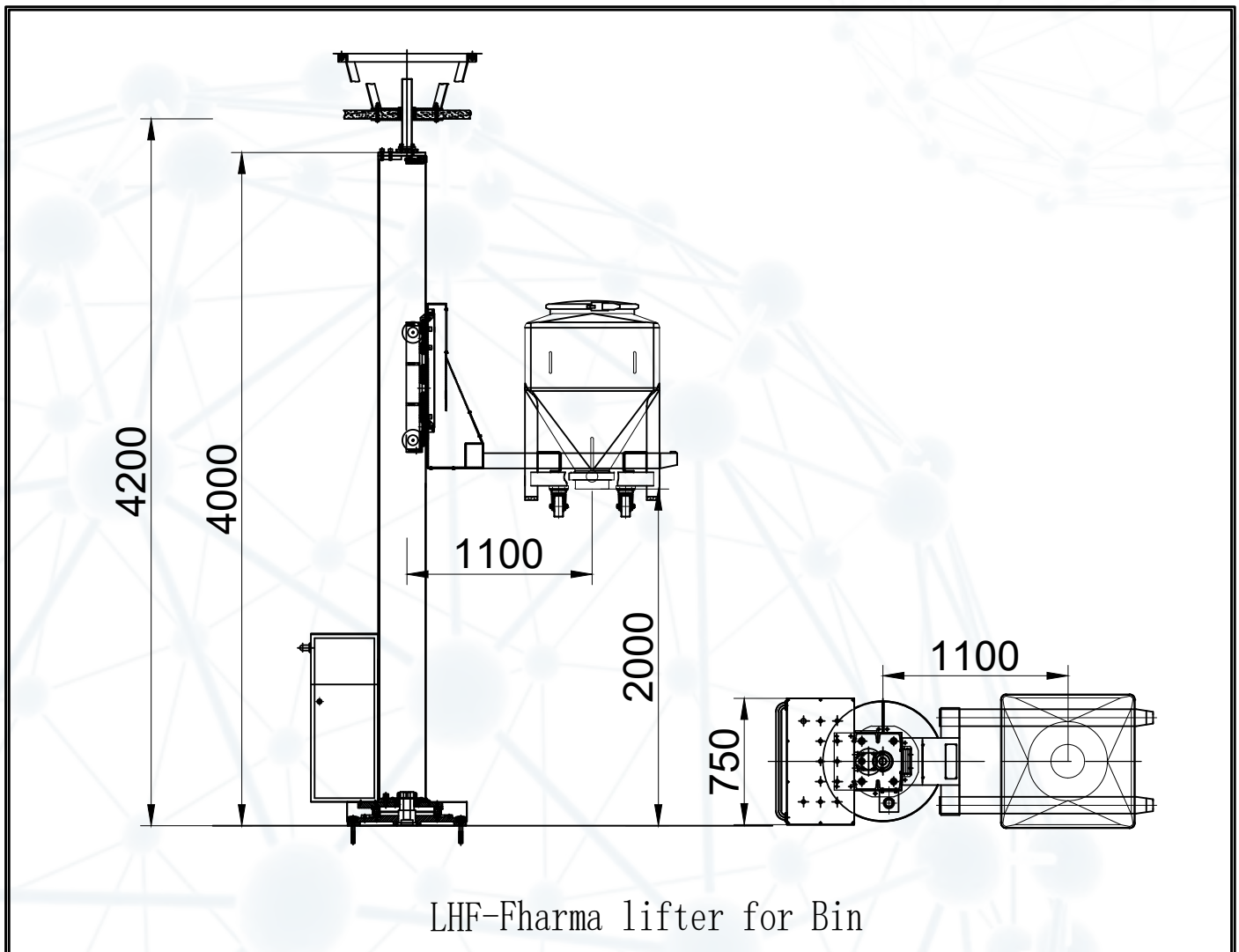
our superior

Pharma Lifter For Bin PRODUCT



Pharma Lifter For Bin Application

- ◆ Pharmaceutical Industry
- ◆ Food Industry
- ◆ Health Food Industry
- ◆ Raw Material Industry
- ◆ Chemical Industry
- ◆ Cosmetics Industry



Pharma Lifter For Bin Specification

Technical parameters

Model	Main structural dimensions							Net load (kg)	Total power (kw)	Weight (T)
	L	L1	W	W1	H	H1	H2			
LHF-400	1810	620	600	750	4000	2500	3800	200	2.2	500
LHF-600	2010	620	800	750	4000	2500	3800	300	2.2	550
LHF-800	2010	620	800	750	4000	2500	3800	400	2.2	600
LHF-1000	2210	620	1000	750	4000	2500	3800	600	2.2	650
LHF-1200	2210	620	1000	750	4200	2500	4000	800	2.2	800
LHF-1500	2410	620	1200	750	4200	2500	4000	1000	3	850
LHF-1800	2410	620	1200	750	4300	2500	4100	1200	3	950
LHF-2000	2410	620	1200	750	4400	2500	4200	1500	3	1100

Moveable Column Lifter

- Feature ■
- Function ■
- Advantage ■
- Application ■
- Specification ■

Moveable Column Lifter Feature

- ◆ Austenitic stainless steel is used for the machine's body
- ◆ With no dead angle and a concave-convex face it's simple to clean
- ◆ Featured by small floor space, simple operation and good practicability
- ◆ The drum is raised to a specific height and turned in any direction
- ◆ It is characterized by ease of feeding and connection as well as high safety and dependability



It improves manufacturing operations, reduces labor intensity and minimizes dust pollution ◆

Anti-mis operation mechanism on a discharging butterfly valve ◆

It's easy to dismantle and clean, and it's well-sealed ◆

Drum with a locking mechanism and a sealing device ◆

Working without releasing dust or allowing materials to leak ◆

Both the inside and outside have been finely polished ◆

Moveable Column Lifter Function

- ◆ It works by first locking the drum with the cone adapter, then raising the drum with the raise button
- ◆ Push the equipment into the process location of the to-be-connected equipment
- ◆ By pressing the lower button, the butterfly valve is automatically lowered to the desired position and the next processing operation is initiated



our superior
**Moveable
Colume Lifter** PRODUCT

Moveable Column Lifter Advantage

- ◆ This equipment is designed to transport, load and discharge raw materials in/on/form the IBC or the drum

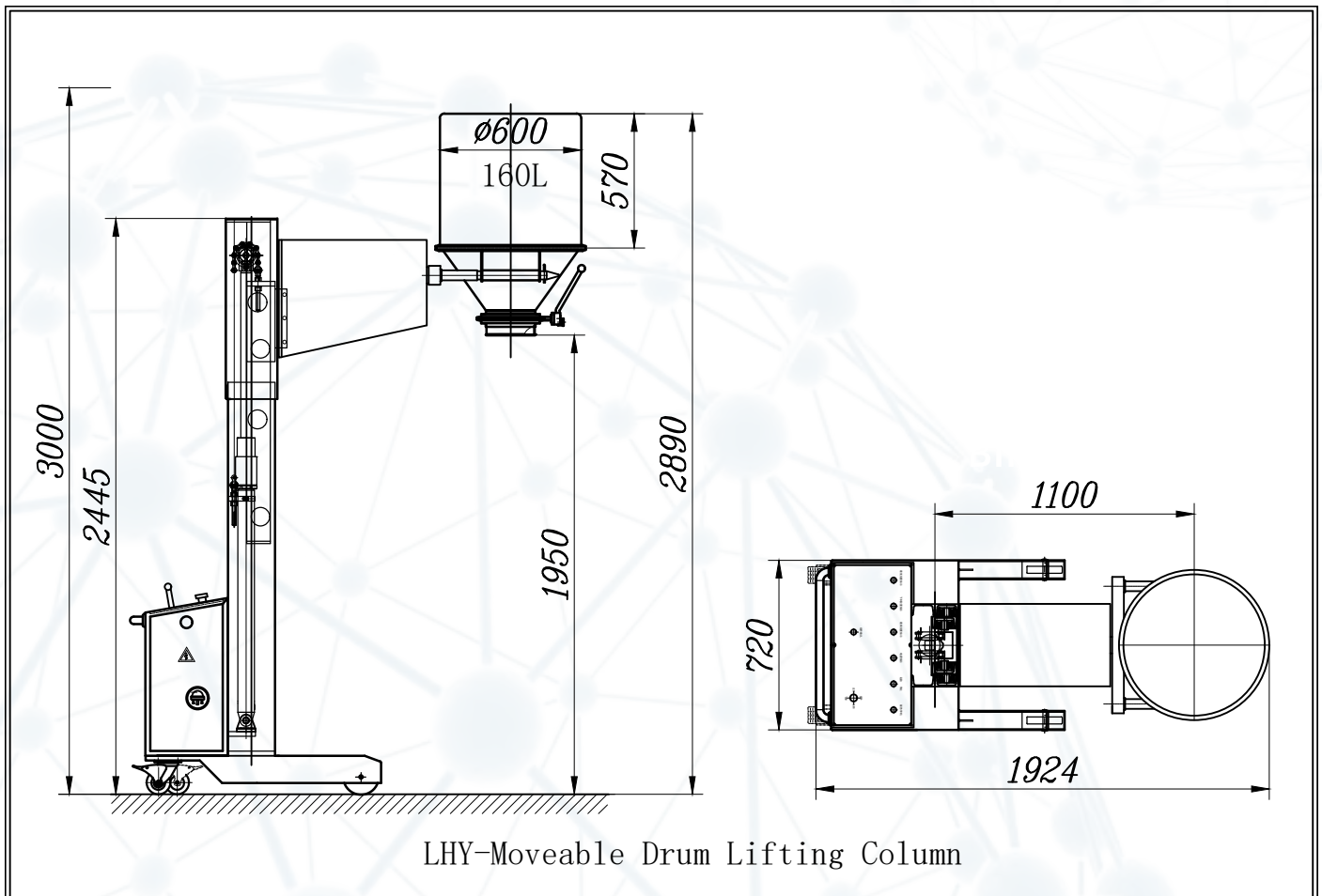
our superior

Moveable Column Lifter PRODUCT



Moveable Column Lifter Application

- ◆ Pharmaceutical Industry
- ◆ Food Industry
- ◆ Health Food Industry
- ◆ Raw Material Industry
- ◆ Chemical Industry
- ◆ Cosmetics Industry



Moveable Column Lifter Specification

Technical parameters

Model	Main structural dimensions									Net load (kg)	Total power (kw)	Weight (T)
	L	L1	L2	W	H	H1	H2	H3	DN			
LHY-50	1700	950	500	650	2800	1800	1950	2580	150	50	1.5	310
LHY-100	1980	1060	600	750	3000	1800	1950	2740	200	100	2.2	420

Fixed Column Lifter

- Feature ■
- Function ■
- Advantage ■
- Application ■
- Specification ■

Fixed Column Lifter Feature

- ◆ The machine's body is made of austenitic stainless steel
- ◆ It's easy to clean since it has no dead angles and a concave-convex face
- ◆ The drum is rotated in either direction after being lifted to a certain height
- ◆ It has a high level of safety and dependability as well as convenience of feeding and connecting



It enhances production processes, lowers labor effort and reduces dust pollution ◆

A discharging butterfly valve's anti-mis operation mechanism ◆

It's simple to disassemble and clean, as well as well-sealed ◆

A locking mechanism and a sealing device for a drum ◆

Fixed Column Lifter Function

- ◆ It operates by locking the drum with the cone adapter before elevating it with the raise button
- ◆ Push the equipment into the to-be-connected equipment's process site
- ◆ The butterfly valve is automatically lowered to the proper position when the lower button is pressed



our superior

Fixed Column Lifter PRODUCT

Fixed Colume Lifter Advantage

- ◆ This equipment is designed to discharge raw materials for the next process
- ◆ It is able to carry heavy load

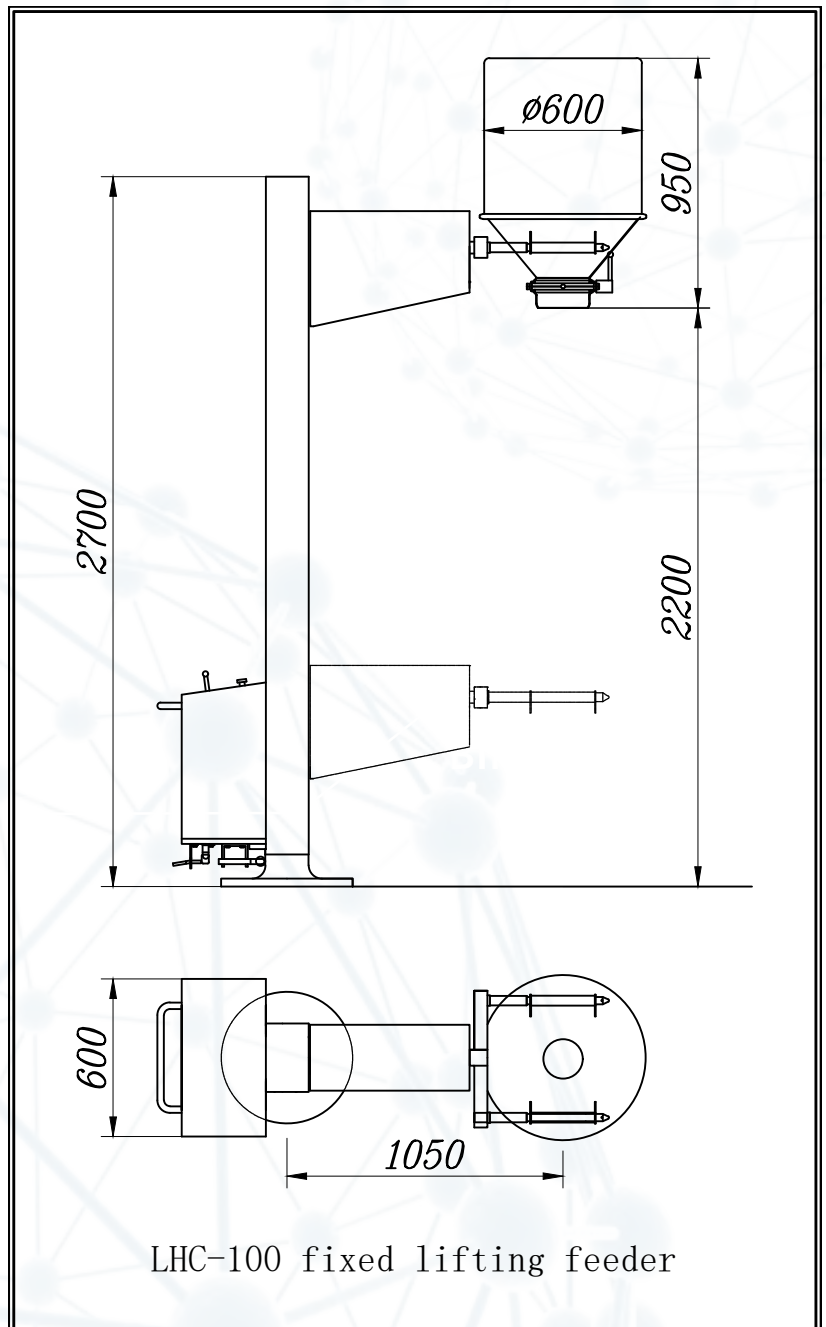
our superior

Fixed Column Lifter PRODUCT



Fixed Column Lifter Application

- ◆ Pharmaceutical Industry
- ◆ Food Industry
- ◆ Health Food Industry
- ◆ Raw Material Industry
- ◆ Chemical Industry
- ◆ Cosmetics Industry



Fixed Column Lifter Specification

Technical parameters

Model	Main structural dimensions						Net load (kg)	Total power (kw)	Weight (T)
	L	W	H	H1	H2	ND			
LHC-50	1900	620	3200	1950	1800	150	50	1.5	350
LHC-100	1960	720	3400	1950	1800	200	100	2.2	450
LHC-100	1960	720	3600	1950	1600	200	150	2.2	530

LHM Pharma Lifter With Cone-Mill

- Feature ■
- Function ■
- Advantage ■
- Application ■
- Specification ■

LHM Pharma Lifter With Cone-Mill Feature

- ◆ The Pharma Lifter for Bin's column is composed of unique channel steel with cone-mil
- ◆ It uses integrated control technology to provide consistent and dependable performance
- ◆ Hydraulic or mechanical lifting can be used in the lifting and drive system
- ◆ It improves manufacturing operations, decreases labor intensity and minimizes dust pollution



- ◆ To avoid damage or incorrect operation, use an interlock
- ◆ The equipment is adaptable and can handle a variety of batch sizes
- ◆ Different size sieves are interchangeable for cone-mill
- ◆ Uniform size reduction of dry material for cone-mil
- ◆ The roughness of the inner surface is less than 0.4 μ m about cone-mill

LHM Pharma Lifter With Cone-Mill Function

- ◆ The conical hopper is assembled onto the bowl during operation. Turn the bowl to the desired position when it has been raised. The bowl is lowered to work height, the cone-mill is started, the butterfly valve is opened, and the materials are transported to the next operation



our superior

**LHM Pharma Lifter
With Cone-Mill** PRODUCT

LHM Pharma Lifter With Cone-Mill Advantage

- ◆ Shifting
- ◆ Transferring
- ◆ Cost Savings
- ◆ Operation in Silence

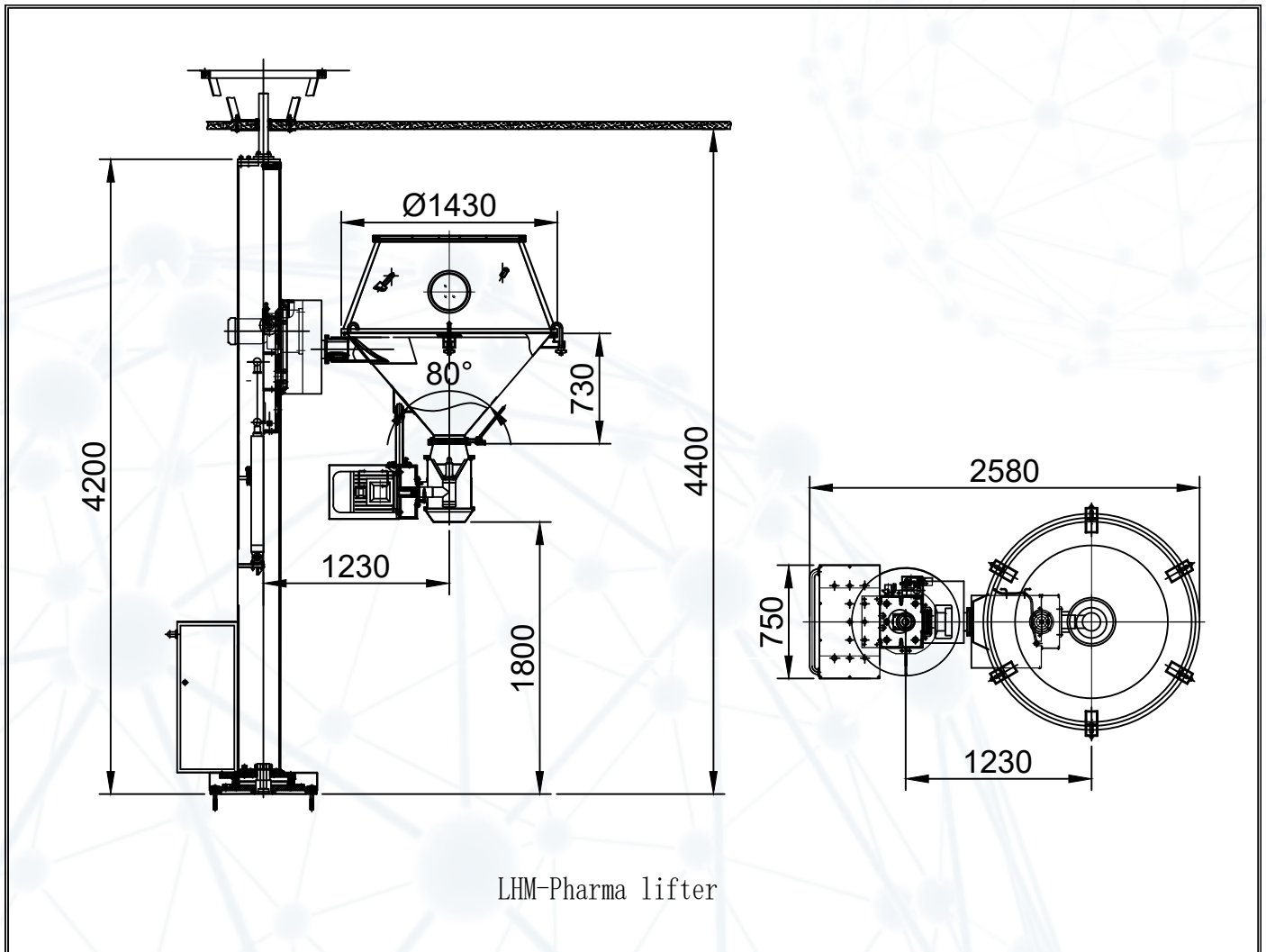
our superior

LHM Pharma Lifter With Cone-Mill PRODUCT



LHM Pharma Lifter With Cone-Mill Application

- ◆ Pharmaceutical Industry
- ◆ Food Industry
- ◆ Health Food Industry



LHM Pharma Lifter With Cone-Mill Specification

Technical parameters

Model	LHM-200	LHM-300	LHM-400	LHM-500	LHM-600	LHM-800	LHM-1000
Equipped with fluid bed equipment specification	200	300	400	500	600	800	1000
Buffering material container(L)	200	300	400	500	600	800	1000
Mill capacity(kg/h)	30-300	30-300	45-450	45-450	70-700	100-800	100-1000
Mill granularity range(mesh)	14~80 (Depending on mesh size)						
Total power(kw)	5.5	5.5	5.5	5.5	6.5	6.5	6.5

LHT Pharma Lifter Without Cone-Mill

- Feature ■
- Function ■
- Advantage ■
- Application ■
- Specification ■

LHT Pharma Lifter Without Cone-Mill Feature

- ◆ Operation is simple, and cleaning and maintenance is simple
- ◆ The Pharma Lifter for Bin's column is constructed of unique channel steel without cone-mill
- ◆ It uses integrated control technologies to provide consistent and dependable results
- ◆ Hydraulic or mechanical lifting can be used in the lifting and drive system



It improves manufacturing operations, decreases labor intensity and minimizes dust pollution ◆

To avoid damage or incorrect operation, use an interlock ◆

The equipment is adaptable and can handle a variety of batch sizes ◆

The working noise level is at ≤ 70 decibels (A) ◆



LHT Pharma Lifter Without Cone-Mill Function

- ◆ During operation, the fluid bed dryer, fluid bed processor, or fluid bed granulator's product container is precisely mounted onto the conical hopper
- ◆ To lift the container, press the lifting button and spin it 180 degrees
- ◆ Ensure that the column is horizontally aligned with the following process equipment's feeding port
- ◆ To begin discharge, open the butterfly valve



our superior

LHT Pharma Lifter
Without Cone-Mill PRODUCT

LHT Pharma Lifter Without Cone-Mill Advantage

- ◆ It is an appropriate device for transferring solid materials from the container of a fluid bed dryer, fluid bed granulator, or fluid bed processor to the next processing equipment after granulating and drying

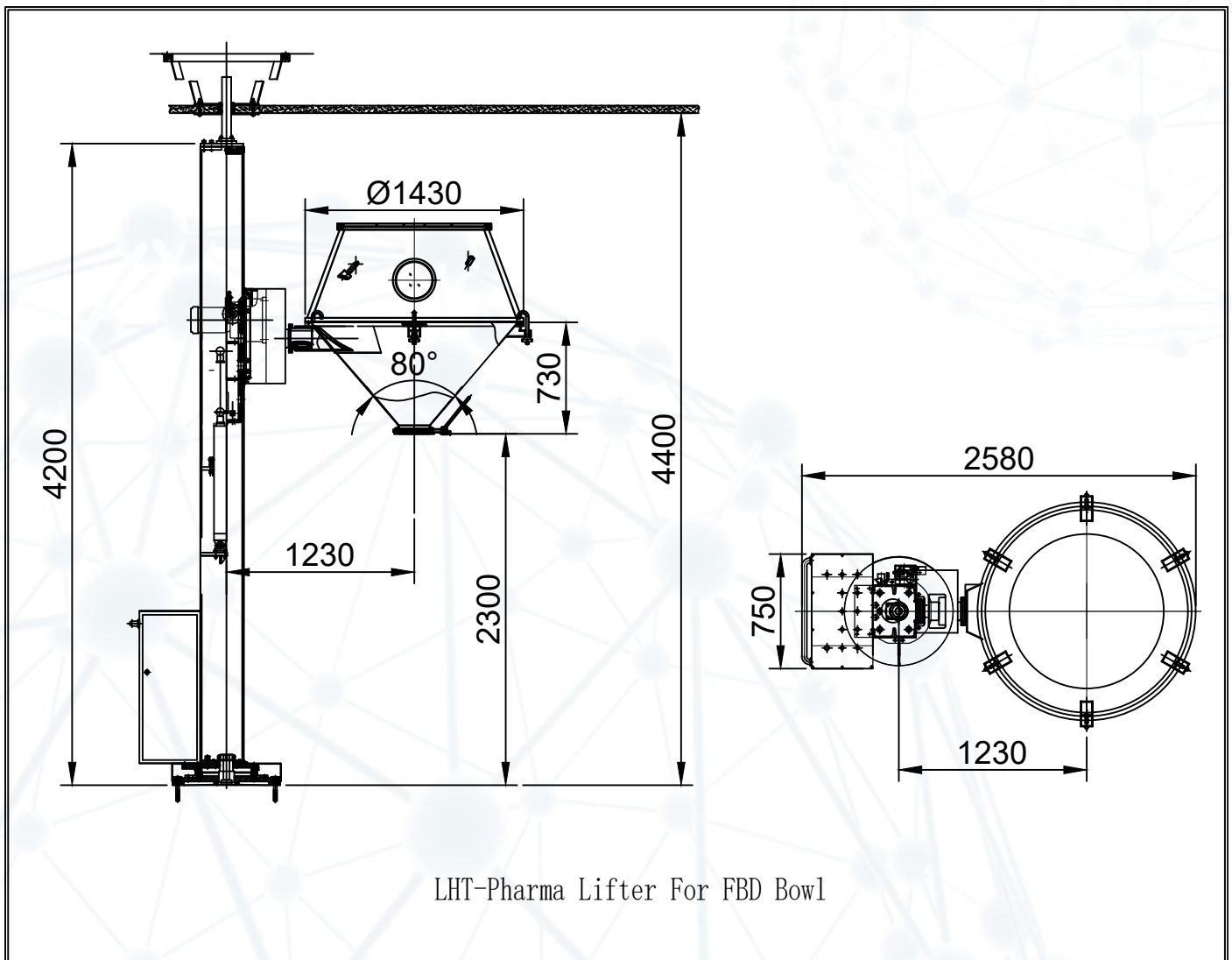
our superior

LHT Pharma Lifter Without Cone-Mill PRODUCT



LHT Pharma Lifter Without Cone-Mill Application

- ◆ Pharmaceutical Industry
- ◆ Food Industry
- ◆ Health Food Industry
- ◆ Chemical Industry



LHT Pharma Lifter Without Cone-Mill Specification

Technical parameters

Model	LHT-200	LHT-300	LHT-500	LHT-800	LHT-1000
Equipped with fluid bed equipment specification	100~200	300	400~500	600	800~1000
Rated lifting weight(kg)	200	300	500	800	1000
Max lifting weight(kg)	260	400	650	1040	1300
Mill granularity range(mesh)	14~80(Depending on mesh)				
Crotch turning angle	180°				
Column turning angle	360°				
Lifting motor power	2.2	2.2	2.2	2.2	2.2
Turning motor power	0.75	0.75	1.5	1.5	1.5